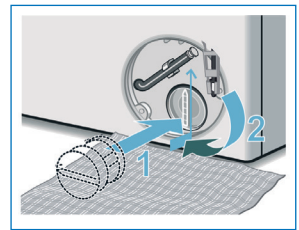
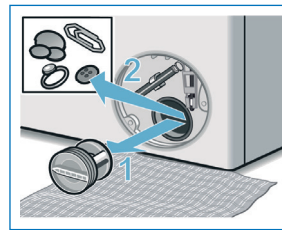
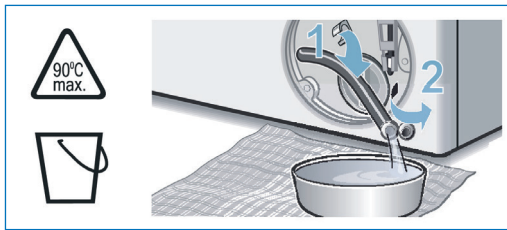


## Cleaning checklist 14-day-interval

This checklist will help you as a WeWash partner to perform the proper cleaning of the machine(s).  
If you have any questions or need to report damage, please contact [support@we-wash.com](mailto:support@we-wash.com) or +49 89 740 55 44 00.

### 1. Cleaning the washing machine(s)

- Surface(s) cleaned (e.g. from detergent residue or dust).
- Sealing rubber(s) cleaned from any foreign objects (e.g. hair clips, coins).
- Discharge pump(s) opened and any foreign objects (e.g. hair clips, coins) removed and the small propeller cleaned (e.g. from hair) so that it can rotate freely.



- Detergent drawer(s) cleaned – depending on the machine model

**Standard model:** Users fill in detergent themselves. Model number: WAY32740WW, usually a white appliance

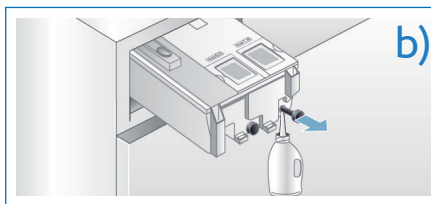
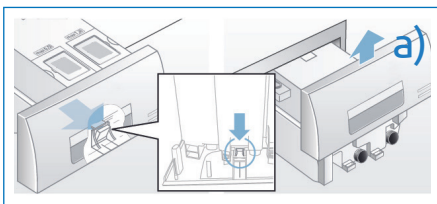
- Detergent drawer(s) removed and cleaned under running water.

**i-DOS-model:** You refill detergent regularly. Model number: WAY3274XWW, usually a silver appliance

- Detergent drawer(s) cleaned (e.g. from detergent residues or dust).

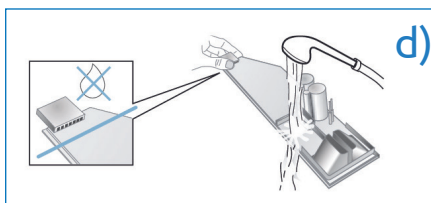
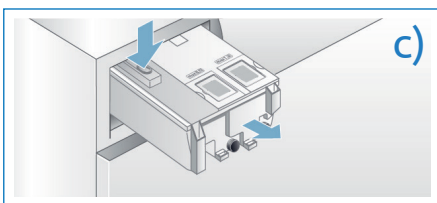
(a) Open the detergent drawer, pull the release lever on the back of the drawer handle slightly towards you and at the same time pull the drawer handle up and remove it.

(b) Remove the stopper from the dosing container and drain the contents into a container.



(c) Press the blue release lever on the top of the drawer and remove the drawer completely.

(d) Carefully remove the lid of the drawer and clean the bowl and lid with a soft, damp cloth.  
Note: Dry before pushing back in.

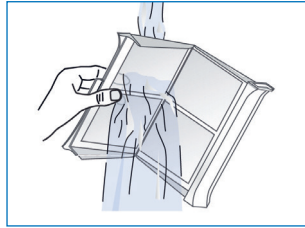
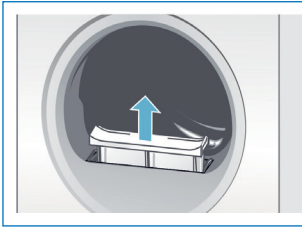


**Caution!** The detergent drawer has electrical components. Contact with water can damage them. Do not submerge the lid in water.

(e) Dry the bowl and lid and put them back together.

## 2. Cleaning the dryer

- Surface(s) cleaned (e.g. from detergent residues or dust).
- Lint filter(s) (two pieces per dryer) emptied and cleaned.



## 3. General check of the laundry room

- Report damage, theft, vandalism or other special issues to +49 89 740 55 44 00 or [support@we-wash.com](mailto:support@we-wash.com).
- Garbage can for lint disposal available and emptied.
- Laundry room note is posted at the entrance door of the laundry room.
- Laundry room posters are posted in the laundry room.
- Machine stickers are affixed to washing machine(s) and dryer(s).

### Do you have any other questions regarding the cleaning?

Scan this QR code for a video on exemplary cleaning.

Cleaning instructions for the detergent drawer of the machines with automatic dosing are not included in the video.

Is something missing or has to be replaced? Message to [support@we-wash.com](mailto:support@we-wash.com) is sufficient – we'll send it to you!

